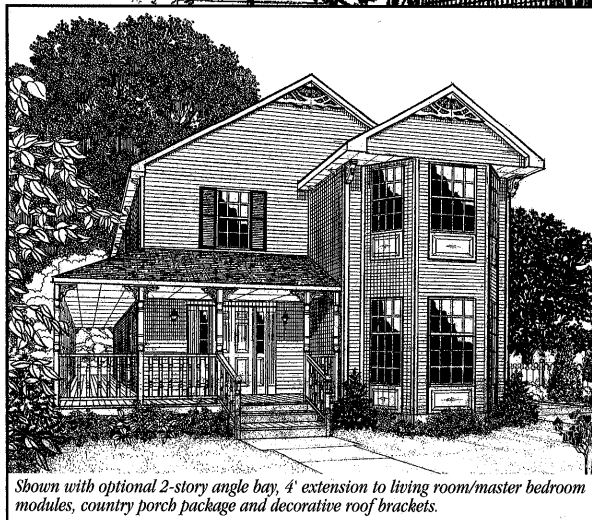


WESTCHESTER MODULAR HOMES

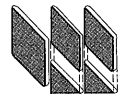


Shown with optional 2-story angle bay, 4' extension to living room/master bedroom modules, country porch package and decorative roof brackets.

Shown with optional first floor angle bay, front porch package and decorative roof brackets.

The Richmond

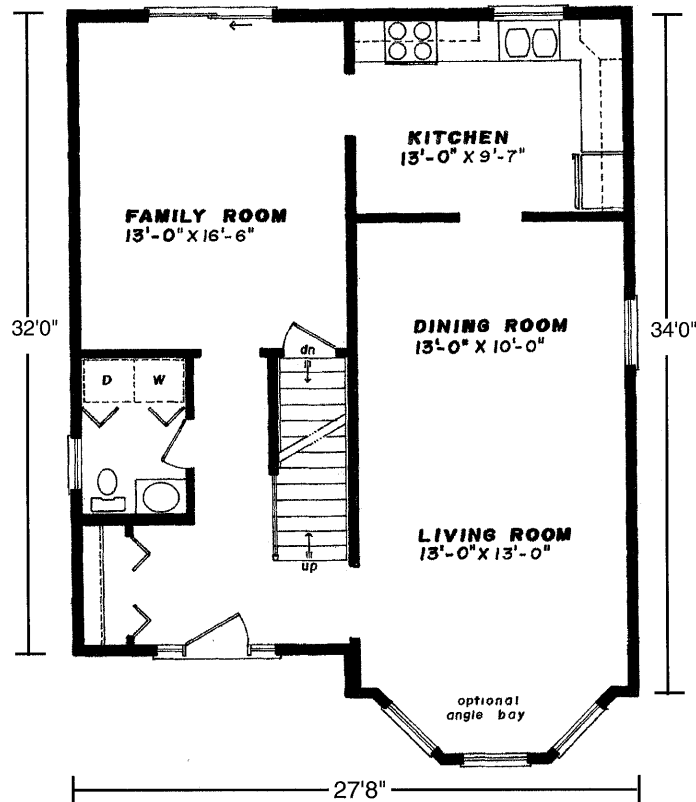




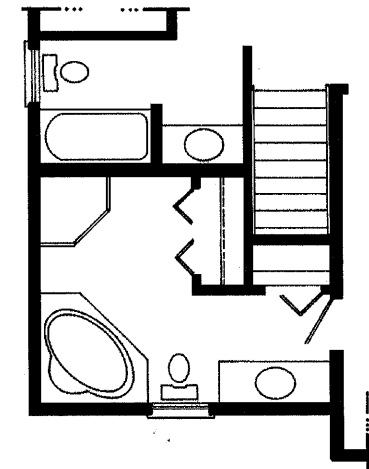
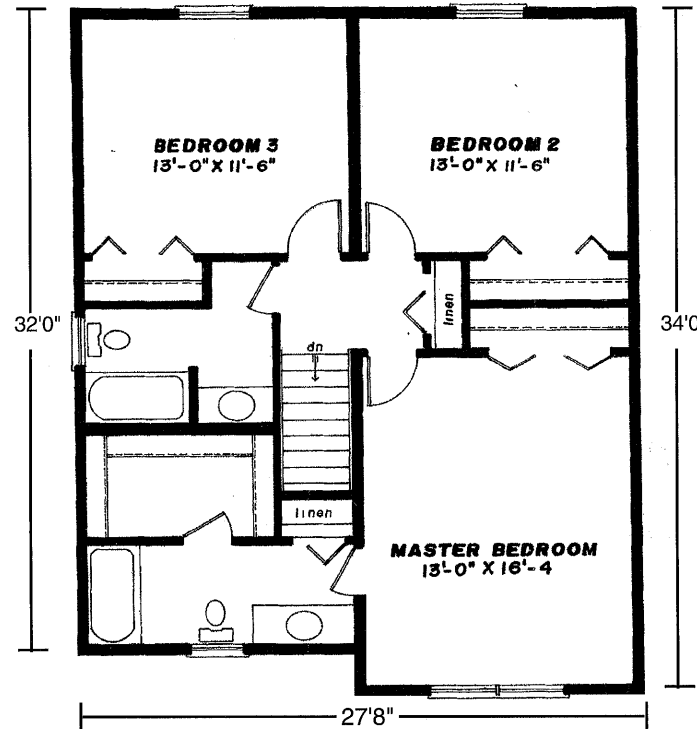
27'8" x 32'3/4" • 1848 Sq. Ft.

WESTCHESTER MODULAR HOMES

First Floor



Second Floor



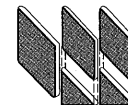
Optional Master Bath

Standard Richmond Features

- 3 Spacious Bedrooms
- 2 1/2 Baths
- Master Suite Features Private Bath with Walk-In Closet
- Formal Dining Room
- Formal Living Room
- Eat-In Country Kitchen
- "Cottage Style" 3056 Lower Level Front Windows
- Fireplace Options Available
- "Boxed-Out" and "Angle-Bay" Options Available
- Consult an Authorized Westchester Builder for a Complete List of Options
- Artist's renderings and Floor Plan Dimensions are approximate. All specifications must be Written in the Contract. No oral conditions.

Featuring High-Quality Andersen® Products

Andersen® WINDOWS • DOORS AW



WESTCHESTER MODULAR HOMES, INC.

AN EMPLOYEE OWNED COMPANY

30 Reagans Mill Rd. • Wingdale, New York 12594

(800) 832-3888 • (845) 832-9400

www.westchestermodular.com