



SCALE: 1/4" = 1'0"

DRAWN BY A. J. FEITH  
 REGIONAL SALES CONSULTANT  
 WESTCHESTER MODULAR  
 HOMES, INC.

BUILDER:

DATE:

HOMEOWNER:

USE GROUP

**R4**

CONST. TYPE:  
 WOOD  
 FRAME

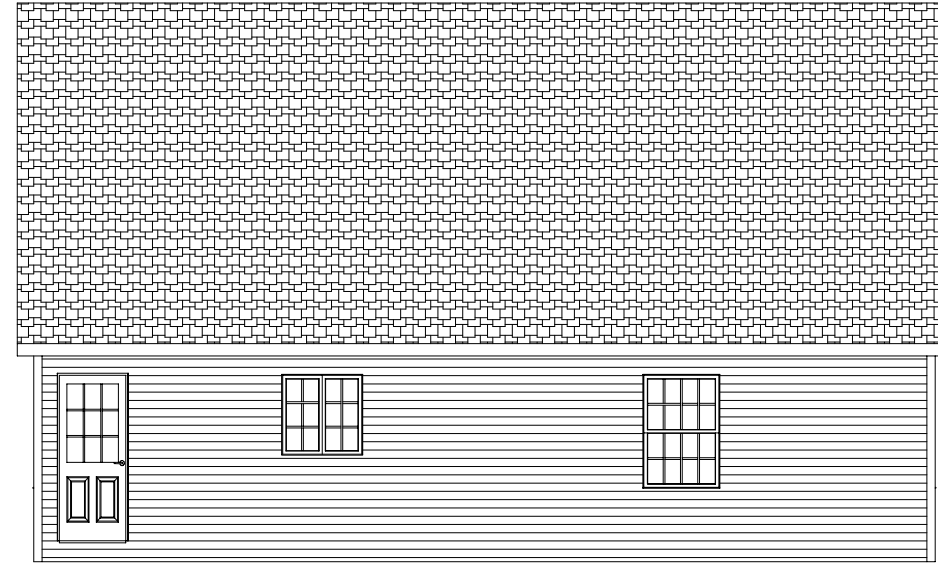
*FALMOUTH WITH  
 A DORMERS*  
**FRONT ELEVATION**

PAGE:

**1**



LEFT



REAR



RIGHT

SCALE: 1/8" = 1'0"

DRAWN BY A. J. FEITH  
 REGIONAL SALES CONSULTANT  
 WESTCHESTER MODULAR  
 HOMES, INC.

BUILDER:

DATE:

HOMEOWNER:

USE GROUP

**R4**

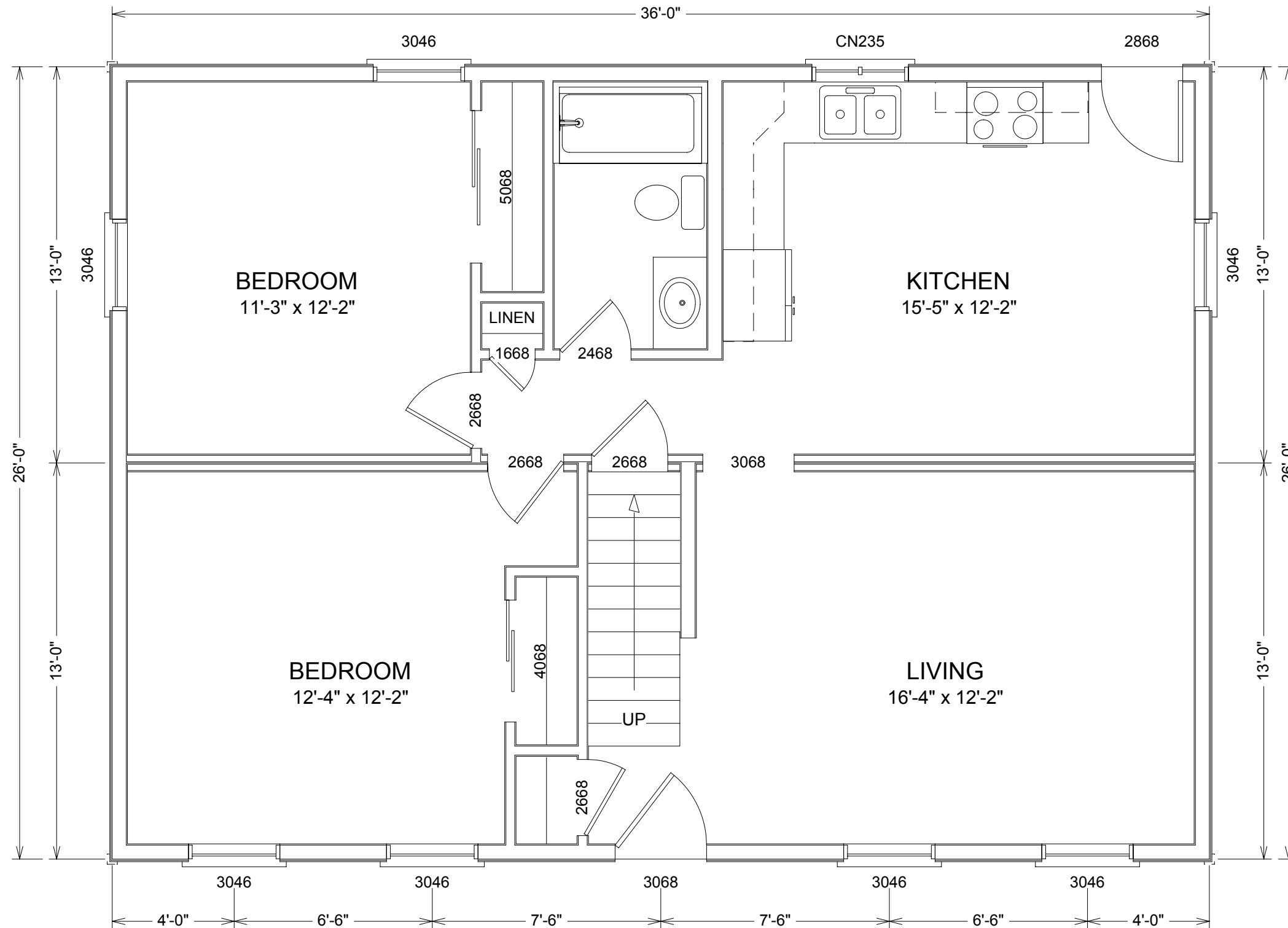
CONST. TYPE:

WOOD  
 FRAME

**FALMOUTH WITH  
 A DORMERS  
 SIDE AND REAR  
 ELEVATIONS**

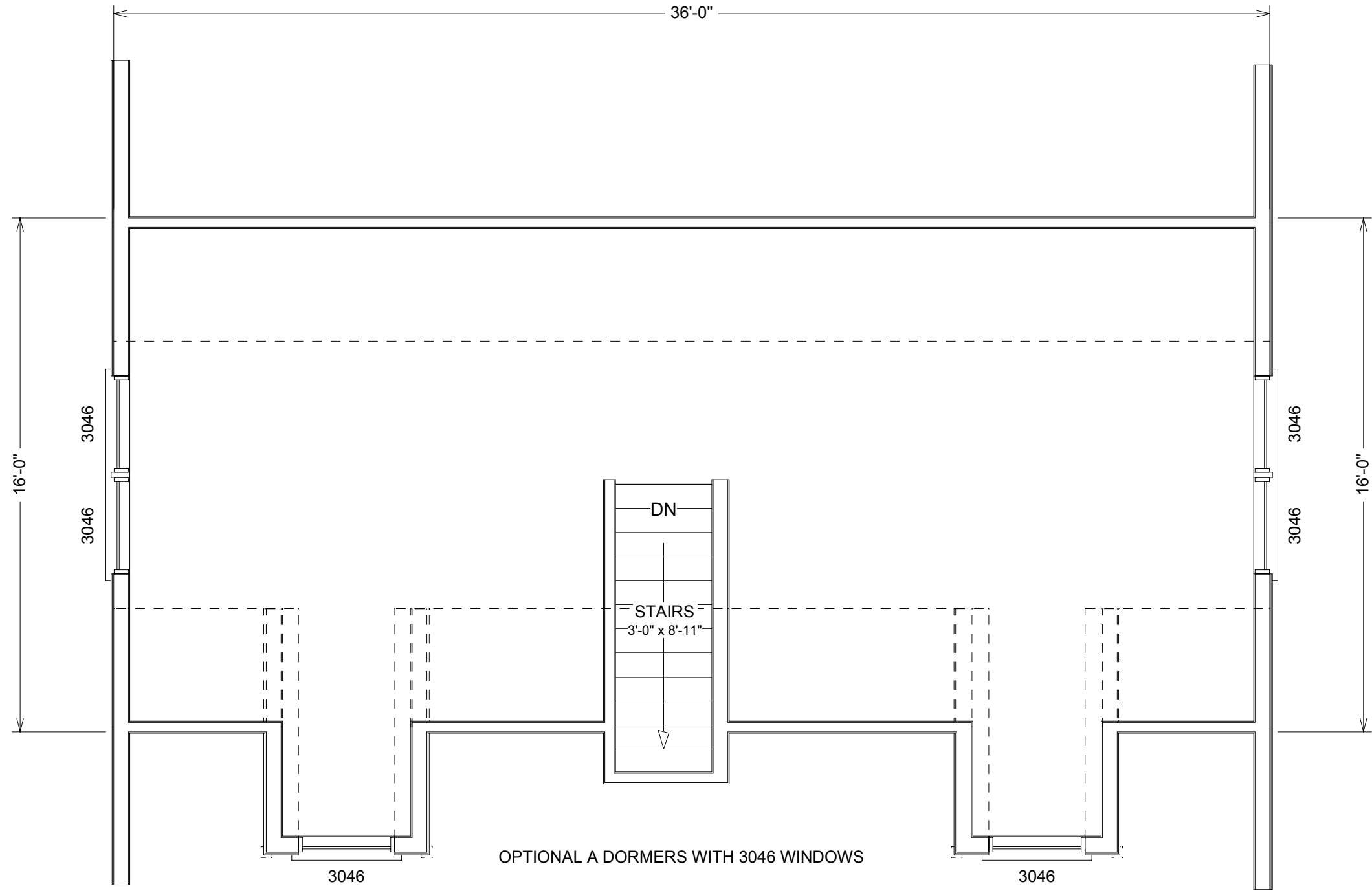
PAGE:

**2**



SCALE: 1/4" = 1'0"

DRAWN BY A. J. FEITH REGIONAL SALES CONSULTANT WESTCHESTER MODULAR HOMES, INC.		BUILDER:	USE GROUP <b>R4</b>		PAGE: <b>3</b>	
DATE:		HOMEOWNER:	CONST. TYPE: WOOD FRAME		FALMOUTH WITH A DORMERS FIRST FLOOR	



SCALE: 1/4" = 1'0"

DRAWN BY A. J. FEITH  
 REGIONAL SALES CONSULTANT  
 WESTCHESTER MODULAR  
 HOMES, INC.  
 DATE:

BUILDER:  
 HOMEOWNER:

USE GROUP  
**R4**  
 CONST. TYPE:  
 WOOD  
 FRAME

FALMOUTH WITH  
 A DORMERS  
 UNFINISHED AREA  
 SECOND FLOOR